



TECHNICAL SPECIFICATIONS

- **Maximum grades:**
Ascend up to: 20%
Descend down to: -10%
- **Compatibility:**
Justo, Direto XR, Direto XR-T, Suito, Suito-T, Tuo.
- **Size:** (H x W x L) 728 x 345 x 387 mm
(H x W x L) 28,6"x13,5"x15,2"
- **QR included**
- **Included adapters:**
QR, 12x100, 15x100, 15x110.
- **Firmware updates:** Yes
- **Weight:** 14 Kg / 30,87 lbs
- **Max load:** 120 kg / 264,5 lbs

SPECIFICATIONS

The latest addition to the innovative Elite indoor cycling ecosystem is the **Rizer**, Elite's new **grade simulator** made with **Adriano Design** that adds **real-time inclines and declines** when you're training indoors on your bike.

The Elite **Rizer** can also simulate handlebars' micro movements when you're riding uphill for the most immersive cycling experience. With the sturdiest structure on the market, the Elite grade simulator will get you out of your seat with realistic grade changes as if you really were on the road, by wirelessly communicating with your home trainer and third party cycling apps



For more realistic rides, the Elite **Rizer** includes a **newly patented steering system** which is designed to improve **pedaling fluidity and the handlebars' feel** when you're going uphill, just like when you're riding on steep terrains.



The steering movement of the **Rizer** lets you freely move your handlebar left and right to direct your on-screen avatar and get the most from your indoor pedalling sessions.

UPHILL AND DOWNHILL, JUST LIKE ON THE ROAD

With Elite's **Rizer** you can ride indoors as if you were outdoors. Just connect your bike to your home trainer and the incline simulator.



Featuring sturdy, patented hardware design, the Elite **Rizer** will provide with true-to-ride **inclines up to 20%** so you can reproduce the highest peaks of world cycling. The Elite grade simulator will also add

declines as low as -10% for you to work every muscle as you master those climbs when you're riding indoors.



STEERING SYSTEM INCLUDED

The Elite **Rizer** incline simulator features **integrated steering functionality** for your front wheel so you can easily move your handlebars left and right to get the most out of your immersive indoor workouts and move every muscle when you're riding your bike uphill. One of the **Rizer's** distinctive feature is that it includes patented hardware technology to improve **handlebar feel** and **comfort** in the spot where you mount your front forks, which is designed to allow easy side movement of the bars when you're blasting those climbs.

The movement of Elite's **Rizer** platform will provide with improved comfort on all legs and shoulders muscles as it recreates the same motion dynamics that you would find on the road.

By connecting to **Zwift**, the **Rizer** incline simulator can also let you race on courses with enabled steering options so you can **choose your path** and **overtake other cyclists** in virtual rides and races. The future of indoor cycling lies in a complete workout station.



IMPROVING EFFICIENCY WITH DESIGN

As is traditional for Elite, **design and technology** are combined in the **Rizer** to improve comfort and efficiency so you

can achieve the most immersive workout environment when you're riding indoors.



With carrying handle and adjustable feet, the Elite **Rizer** incline simulator comes fully assembled and features an aluminium structure connected to a platform made in a steel and aluminium alloy. Ideal to ensure **great resistance in the most challenging uphill climbs**. All combined with a modern, hi-tech design.

By training on your favorite uphill climbs with **Rizer**, you'll be able to improve your performances and your athleticism uphill and become an **experienced climber**.

OPEN DATA TRANSMISSION

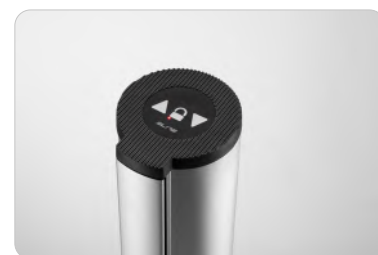
The Elite **Rizer** will communicate directly with your interactive smart trainer to offer automatic grade changes when you're riding on virtual courses.

Steering is enabled with Bluetooth and ANT + FE-C.

Two LED lights will show you whether you're using the grade simulator and/or steering functions. A third LED light on the keypad will show you the current mode of use.

EASY ACCESS TO MAIN COMMANDS

When simulating inclines and declines, the Elite **Rizer** will **automatically change grades** by communicating with third party apps via your home trainer.



To offer increased autonomy when using it, you can use the Elite **Rizer** in **manual mode**, and access to the main commands directly on the keypad placed on the **Rizer** top section.

When you're riding in manual mode, you can pair up the **Rizer** to your trainer, increase or decrease grades by a % point, switch profiles or switch back to **Simulation Mode** and let **Rizer** be managed by the data sent by the software.

CONFIGURATION APP

Elite has developed a **dedicated app** to make it easier to configure your **Rizer**.

You won't need this app to use the **Rizer**, but it will give you easy access to a series of functions designed to simplify the use of our grade simulator, and provide with the most immediate indoor cycling experience.

The app is called **Rizer** and is available for **iOS devices** (iPhone and iPad) and **Android devices** and you can download it from the App store (iOS) and Google Play (Android).

The control app can be used when you're riding to display your current simulated grade and change grades, to switch mode from Simulation to Manual, and to set up and manage up to **5 different** profiles for each user, bike and home trainer.

TOTAL COMPATIBILITY WITH ALL BICYCLES

The Elite **Rizer** is **compatible with all commercially available bicycles**, with disc brakes and 12 mm thru-axle bikes. The adapter for 15 mm thru-axle is included in the box.



RIZER

elite-it.com