

SOLID TECH

Rack of Silence

Rack of Silence offers the optimal form and function to accommodate your equipment.

Its versatile and functional design guarantees minimum resonance and vibration.

The Apparatus Support system is made of extruded aluminum which controls efficiently the resonance as both inside and outside are coated with acrylic glass and insulated from the wooden strut with a cork lined underside. Moreover is the top cork

lined and offers a scratch resistance to the apparatus as well as resonance-free surface to be placed upon.

On top of the Apparatus Support, an optional table can be placed in order to achieve a more traditional rack look.

A top shelf made of a unique sandwich board, especially developed for acoustic damping, with matching veneers. Such top

shelf can be supported by Solid Tech isolator, Discs of Silence.

Rack of Silence Reference line has a unique integrated isolation system with revolutionary capability of decoupling both vertical and horizontal. The Rack of Silence series is available in black or silver anodized aluminum and there are several wood trim veneers as well as lacquers.



Rack of Silence variants and options

Rack of Silence Reference (with isolation integrated)



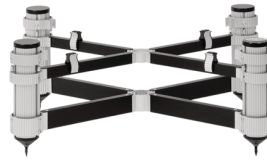
ROS 4 Ref.

Outer dimensions: 900x500x700mm (HxDxW)
Between pillars: 520mm
Total available space in-between shelves: 595mm
Max load basic strut shelf: 40kg
Max load HD strut shelf: 80kg



ROS 3 Ref.

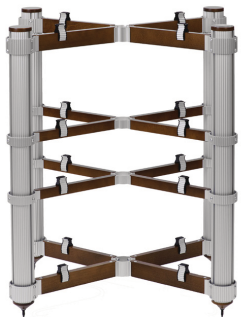
Outer dimensions: 600x500x700mm (HxDxW)
Between pillars: 520mm
Total available space in-between shelves: 380mm
Max load basic strut shelf: 40kg
Max load HD strut shelf: 80kg



ROS 1 Ref.

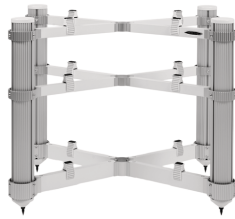
Outer dimensions: 300x500x700mm (HxDxW)
Between pillars: 520mm
Max load basic strut shelf: 40kg

Rack of Silence Regular (without isolation)



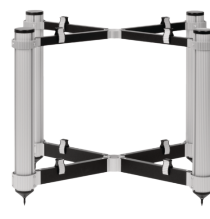
ROS 4 Reg.

Outer dimensions: 900x500x700mm (HxDxW)
Between pillars: 520mm
Total available space in-between shelves space: 595mm
Max load basic strut shelf: 40kg
Max load HD strut shelf: 80kg



ROS 3 Reg.

Outer dimensions: 600x500x700mm (HxDxW)
Between pillars: 520mm
Total available space in-between shelves: 380mm
Max load basic strut shelf: 40kg
Max load HD strut shelf: 80kg



ROS 2 Reg.

Outer dimensions: 600x500x700mm (HxDxW)
Between pillars: 520mm
Total available space in-between shelves: 435mm
Max load basic strut shelf: 40kg
Max load HD strut shelf: 80kg



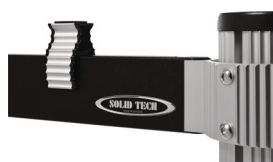
ROS 1 Reg.

Outer dimensions: 300x500x700mm (HxDxW)
Between pillars: 520mm
Max load HD strut shelf: 80kg

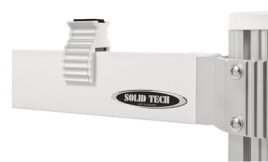
Strut color options



Cherry hard wood "beech"



Black hard wood "beech"

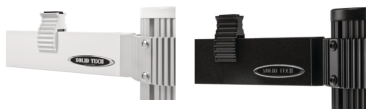


White hard wood "beech"



Walnut hard wood "beech"

Extrusion color options



Extrusion in silver and black anodized aluminum

Optional Small and Large Top Tables



Top table "large" in black, white, walnut, cherry, oak and black oak



Top table "small" in black, white, walnut, cherry, oak and black oak

Isolation system



Reference Isolation



Isolator Support

Optional floor protectors



Floor Protector



Spike Fixed Floor Protector



Feet of Concrete

SOLID TECH

info@solid-tech.net
www.solid-tech.net
+46(0)40 491352

Sporregatan 25, SE-21377 Malmö, Sweden

More information and distributor list
is available in homepage